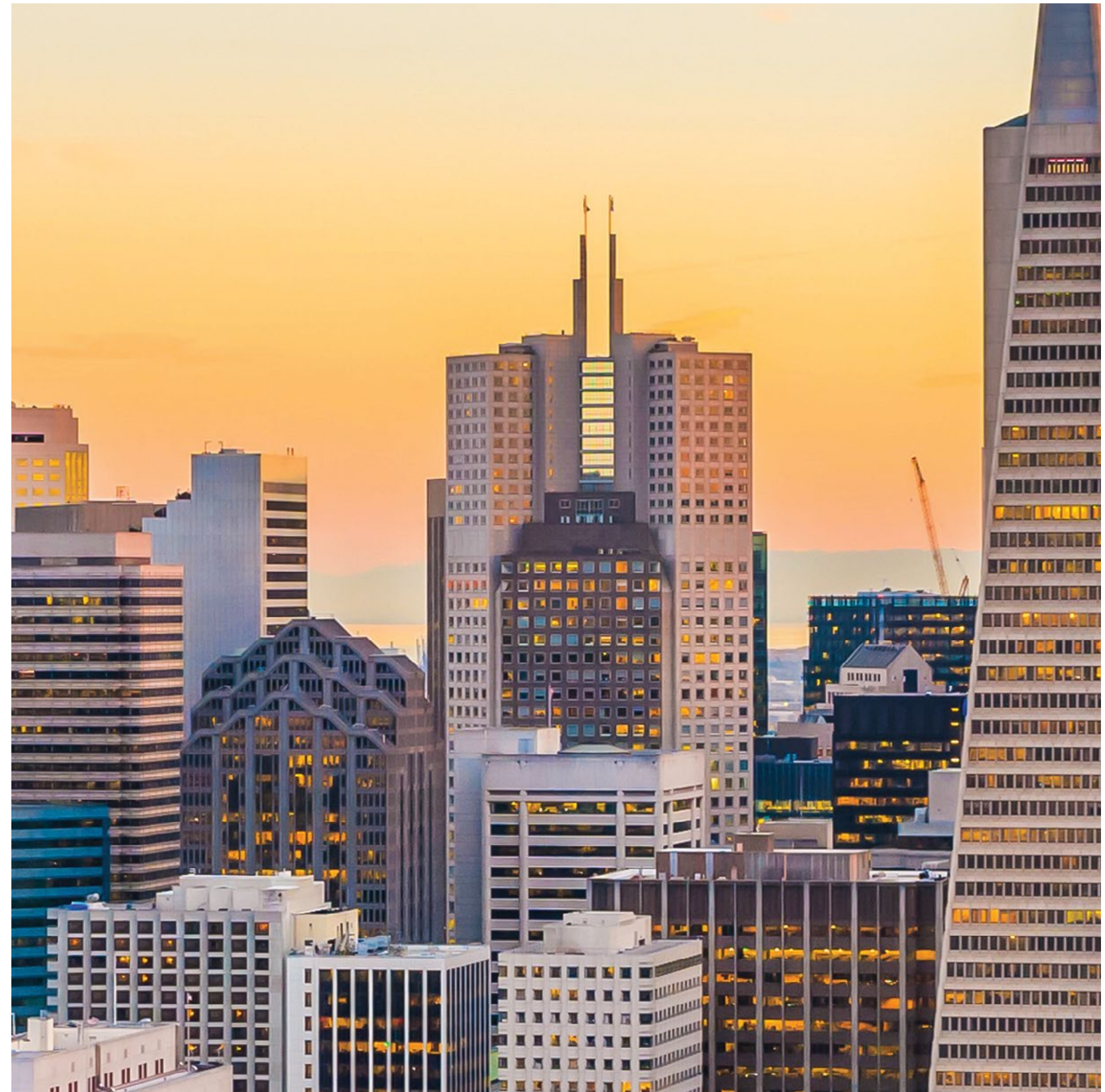




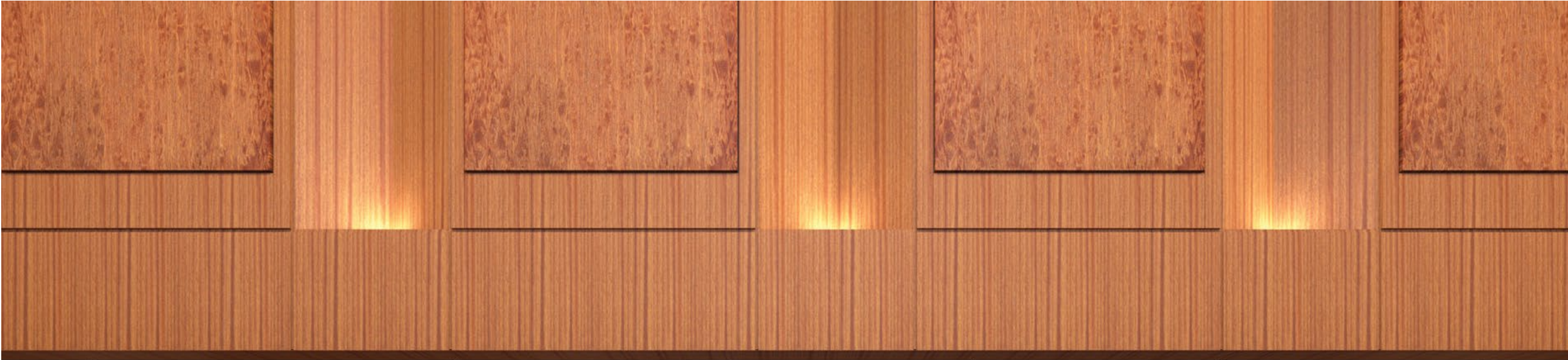
345
CALIFORNIA

345 California

Iconic, class A mixed-use property with 600,000 square feet of office space located in the heart of San Francisco's financial district.



Lobby



Newly renovated Lobby and Plaza



Lobby



The Room

The new Tenant Lounge offers an open access and flexible environment for all building tenants. Perfect for a private moment or hosting meetings and events.



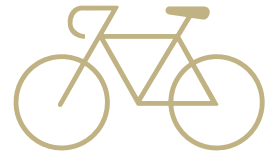
Amenities

Retail amenities including
illycaffè, The Bear & Monarch Restaurant
and Loews Regency San Francisco Hotel



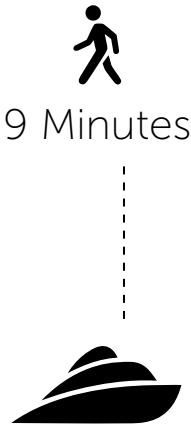


High end locker & shower facilities, with towel service and Molton Brown toiletries



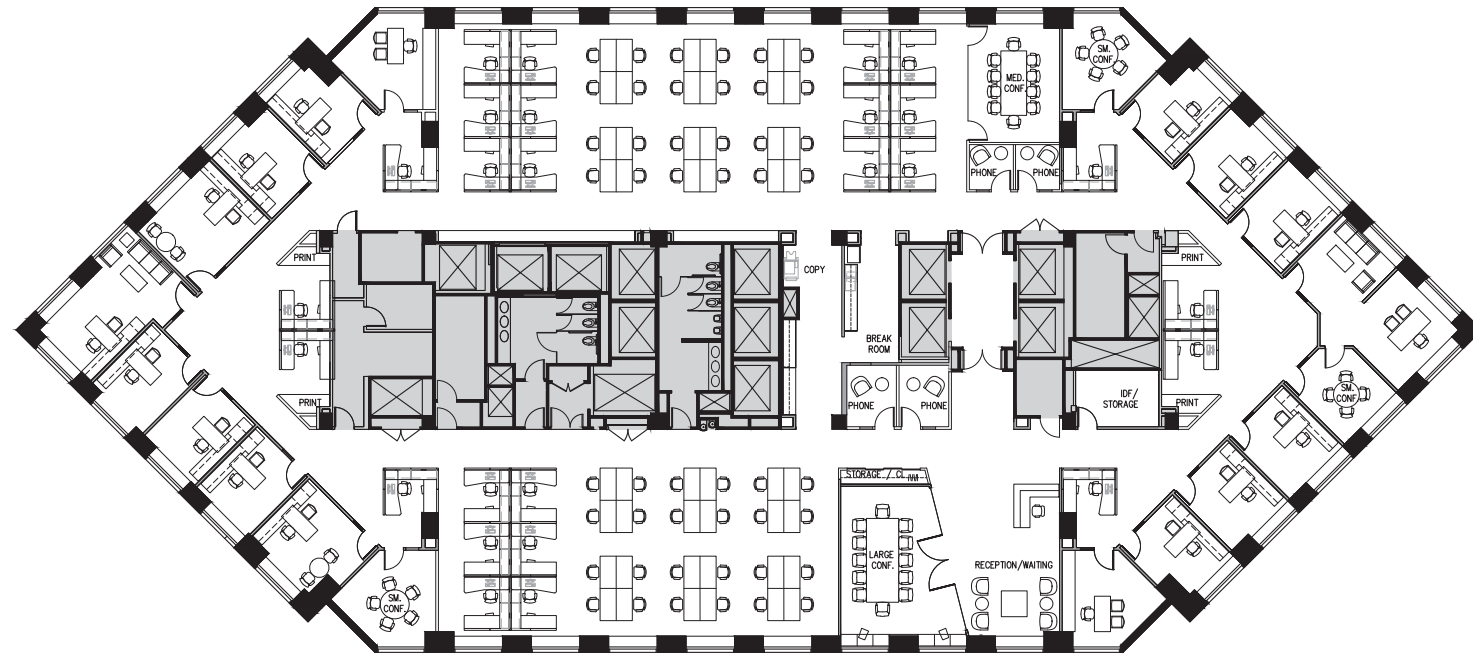
Access to Lockers,
Fix it Station and
Bike Racks

Access

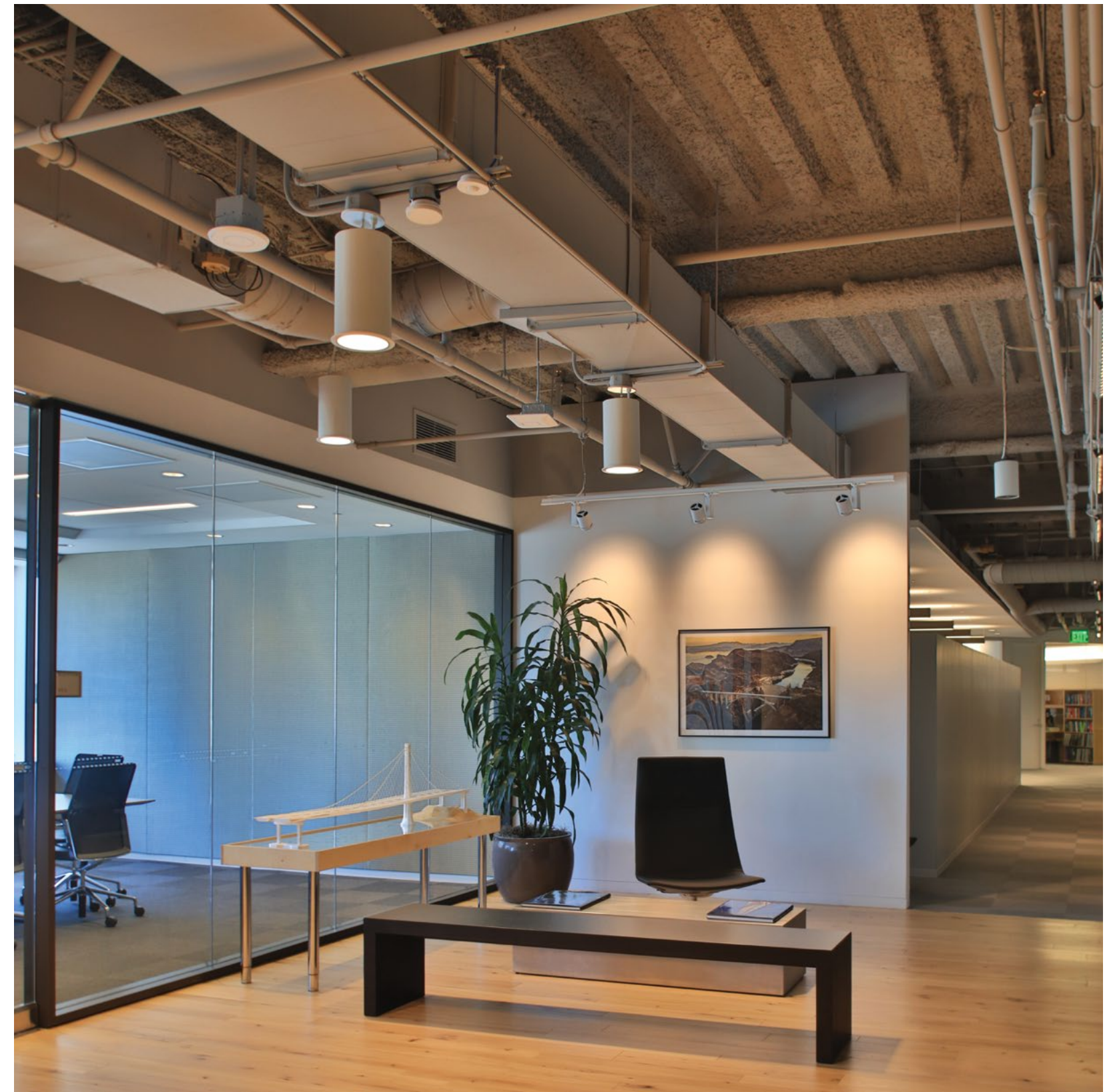


The Floor

Full Floor Hypothetical Plan



Highly efficient floor plates
Ideal for open, creative or private
office intensive layout



Outdoor Space

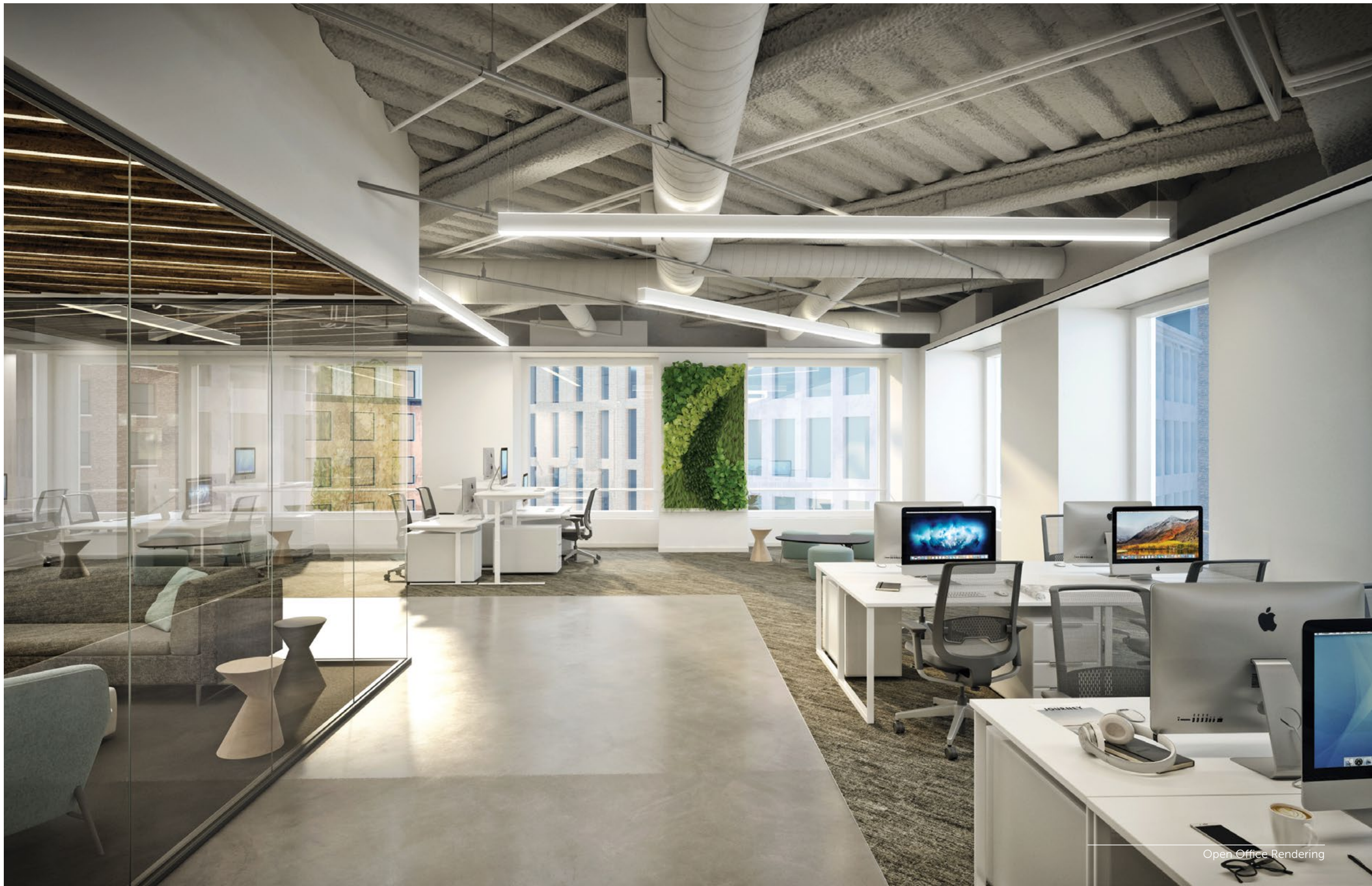
Opportunity to build an outdoor deck for exclusive use for a large block occupancy of 50,000 SF or more on the 5th floor



Design

Create a custom
experience for your
employees





Grow With Us

Flexible large floorplates provide countless opportunities to expand and grow

Transform Your Environment



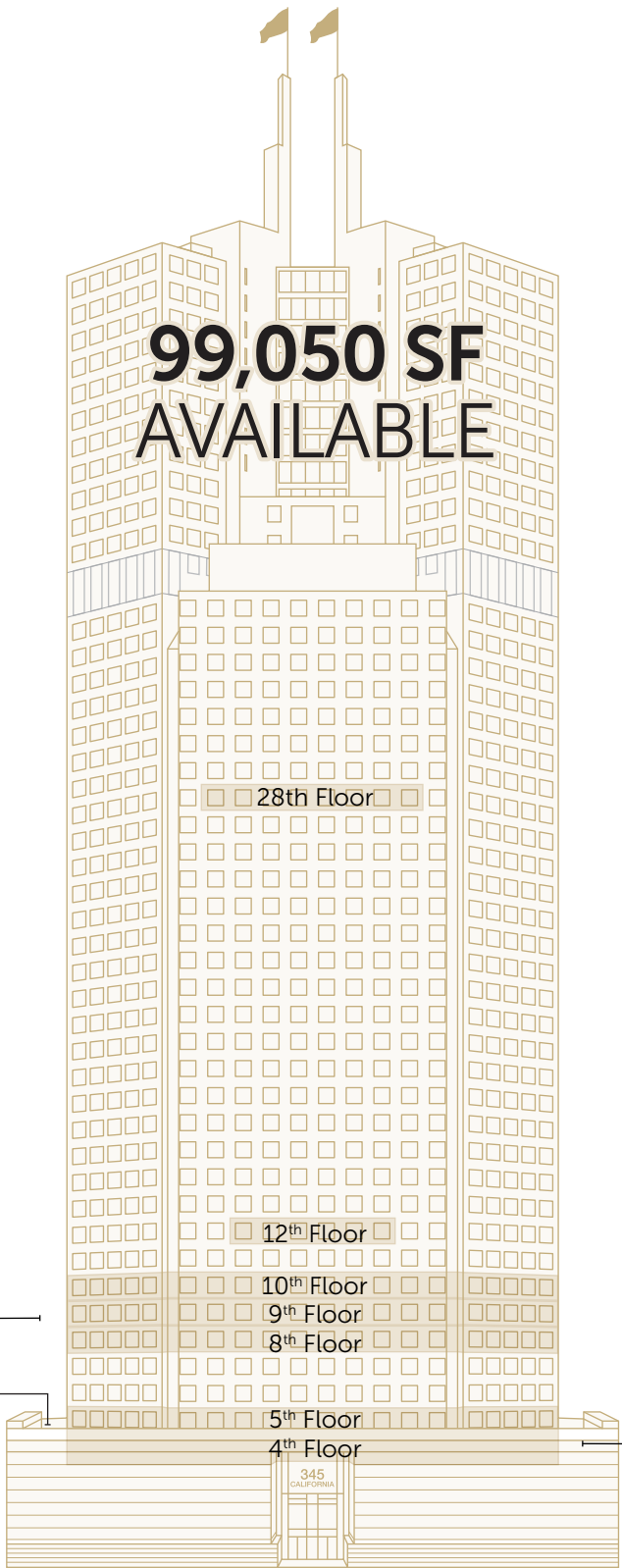
Availabilities

51,156 SF
OF CONTIGUOUS SPACE

99,050 SF
AVAILABLE

34,327 SF
OF CONTIGUOUS SPACE

OPPORTUNITY TO BUILD
EXCLUSIVE USE DECKS



28th Floor	7,988 RSF	Available 08/01/19
12th Floor	5,579 RSF	Available 04/01/20
10th Floor	17,052 RSF	Available 04/01/20
9th Floor	17,052 RSF	Available 04/01/20
8th Floor	17,052 RSF	Available 04/01/20
5th Floor	16,970 RSF	Available 04/01/20
4th Floor	17,357 RSF	Available 04/01/20
TOTAL	99,050 RSF	

Greg Fogg

415 773 3560

greg.fogg@cushwake.com

LIC# 01060589

Ross Robinson

415 773 3576

ross.robinson@cushwake.com

LIC# 01414104

Tim Hogan

415 694 6477

tim.hogan@cushwake.com

LIC# 01375367



METROPOLIS
Investment Holdings Inc.