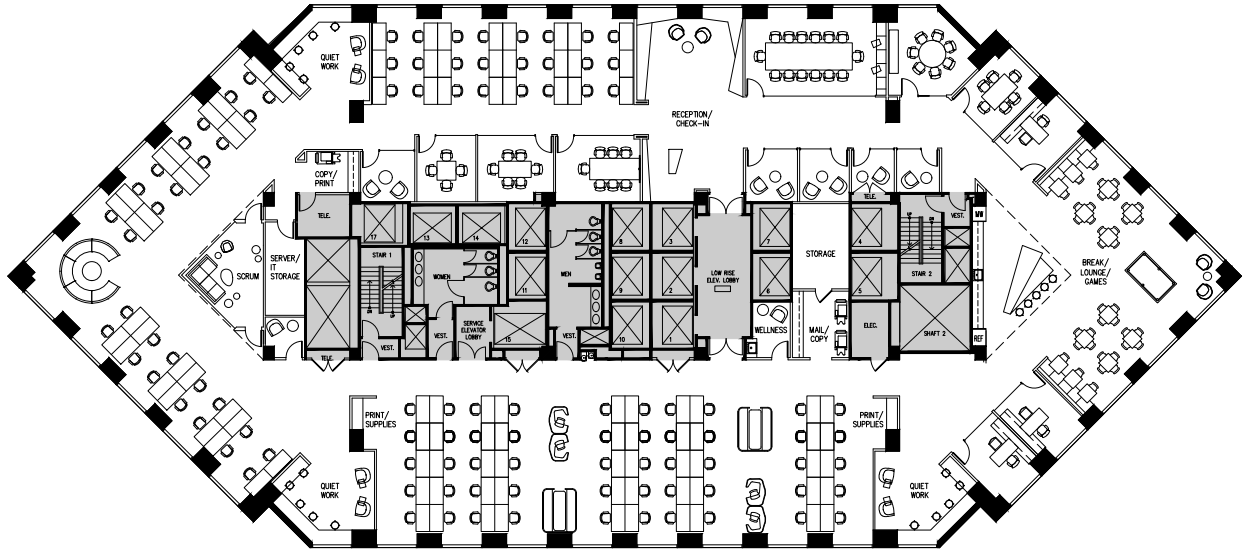




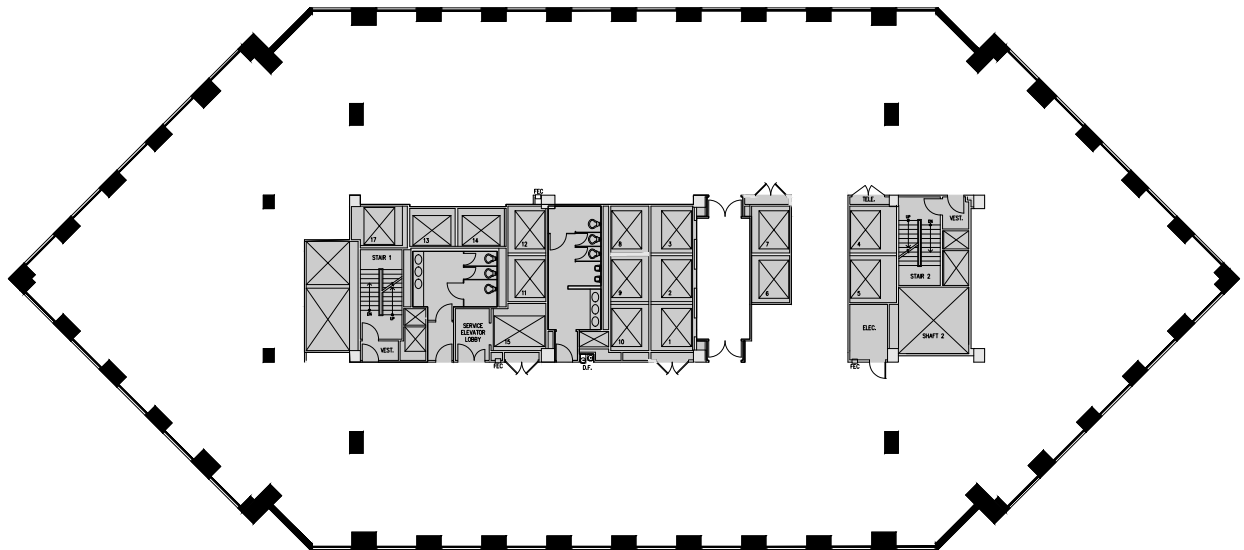
6th Floor | Suite 600 | 16,749 RSF

7th Floor | Suite 700 | 16,732 RSF

6th & 7th floor can be combined  
for a total of 33,481 RSF



Hypothetical Plan



For more information, please contact:

**Greg Fogg**  
415 773 3560  
greg.fogg@cushwake.com  
LIC# 01060589

**Ross Robinson**  
415 773 3576  
ross.robinson@cushwake.com  
LIC# 01414104

**Tim Hogan**  
415 694 6477  
tim.hogan@cushwake.com  
LIC# 01375367



**METROPOLIS**  
Investment Holdings Inc.



**345**  
CALIFORNIA

7th Floor | Suite 700 | 16,732 RSF



For more information, please contact:

**Greg Fogg**  
415 773 3560  
greg.fogg@cushwake.com  
LIC# 01060589

**Ross Robinson**  
415 773 3576  
ross.robinson@cushwake.com  
LIC# 01414104

**Tim Hogan**  
415 694 6477  
tim.hogan@cushwake.com  
LIC# 01375367



**METROPOLIS**  
Investment Holdings Inc.