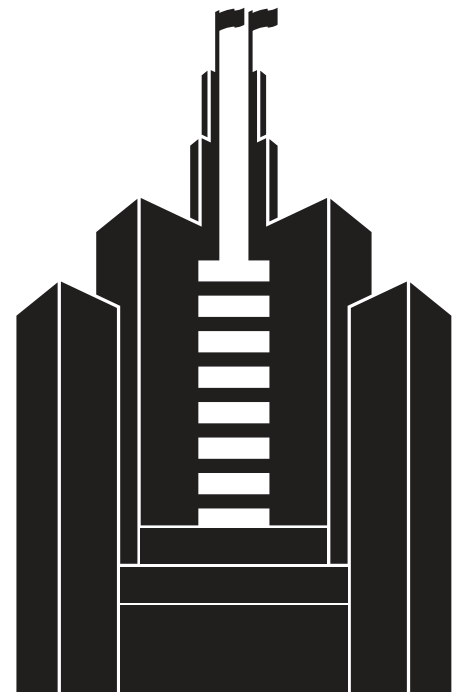


345 CALIFORNIA NEWSLETTER



Experience the Transformation

345 California is a unique property and is instantly recognizable on San Francisco's ever-changing skyline. As San Francisco's identity has evolved, so has 345 California's, as evidenced by our upcoming major projects which will include a new lobby with turnstiles, a tenant lounge, a fitness center and a bicycle depot that are designed to enhance the tenant experience. To further distinguish our brand, we have also created a new logo, shown here, which has been designed to reflect the new 345 California experience. As we begin our various projects we will begin to change out the old logo for this one. We hope you enjoy.



345 CALIFORNIA

TIPS TO AVOID THE FLU



This year's flu season has been particularly tough. Below are 6 of the top tips from the CDC to avoid getting sick.

① Avoid close contact.

Avoid close contact with people who are sick. When you are sick, keep your distance from others to protect them from getting sick too.

② Stay home when you are sick.

If possible, stay home from work, school, and errands when you are sick. This will help prevent spreading your illness to others.

③ Cover your mouth and nose.

Cover your mouth and nose with a tissue when coughing or sneezing. It may prevent those around you from getting sick.

④ Clean your hands.

Washing your hands often will help protect you from germs. If soap and water are not available, use an alcohol-based hand rub.

⑤ Avoid touching your eyes, nose or mouth.

Germs are often spread when a person touches something that is contaminated with germs and then touches his or her eyes, nose, or mouth.

⑥ Practice other good health habits.

Clean and disinfect frequently touched surfaces at home, work or school, especially when someone is ill. Get plenty of sleep, be physically active, manage your stress, drink plenty of fluids, and eat nutritious food.

KINGSLEY TENANT SURVEY

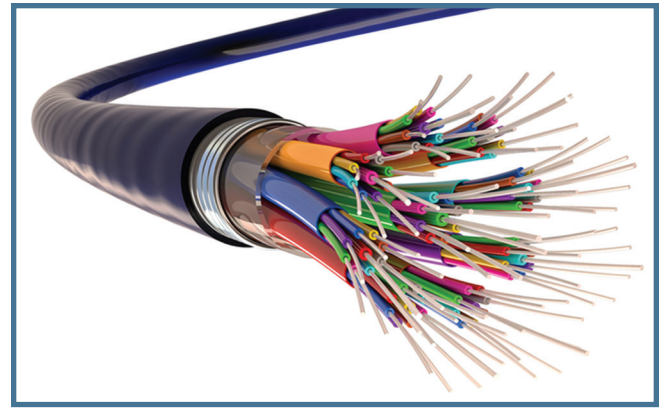


345 California is committed to providing a first-class workplace and exceptional service to each and every tenant. To fulfill this commitment, we conduct a yearly Property and Management Assessment Survey. This survey allows Building Management to see how well we are meeting tenant needs and what areas tenants would like to see change.

The results of the survey are instrumental in our efforts to improve service delivery to you, our customer. We thank you for all your feedback as we continually strive to better meet your needs.

Building Systems Network Almost Complete

In 2016, we completed installation of fiber optic infrastructure throughout the office building from the B1 level to the 36th floor that will enable Internet Service Providers (ISPs) to more readily provide services to our tenants. A fiber trunk was run through our vertical telecommunication path that will allow for quick and easy connection to high-speed internet data communication from a range of ISPs. This past year we completed a project to create a micro data center on level B1 that would serve as the front-end to this fiber optic distribution.



In addition to providing a fast, vertical pathway through the building, a portion of the fiber distribution was run vertically through our electrical riser path to all office floors. This fiber has enabled the installation of a new Buildings Systems Network. This network is completely isolated from the tenant trunk and will allow for power sub-meter, lighting control, and emergency communication system integrations going forward. Future integrations may include a Distributed Antenna System or any number of other integrations that will keep 345 California on the leading edge of the Smart Building movement and the Internet of Things (IoT).

DEBIT PROGRAM

The 345 California Garage has introduced a new debit card parking program. This program is designed to make your parking experience more desirable and easier. Your building access card will be programmed into the garage's parking equipment. You will need to furnish your credit card information at the time of sign-up, at which time, your access card will be linked to your credit card. This works very similar to a Clipper card. We can replenish the debit amount at any time.



When the card reaches a minimum amount, your credit card will be charged the amount you establish, so your access card will work without interruptions. The debit program rate is \$31.00 daily with in/out privileges. This is a discounted rate compare to our daily maximum of \$36.00. We are pleased to also introduce monthly parking passes. You may now load a monthly parking pass on your building access cards for \$450/month.

If you are interested, you may obtain an application from the garage attendants. Alfredo Dawana, Location Manager, can assist you should you have any questions.



Bouquets to Art 2018

The De Young will host its annual floral takeover, now in its 34th year. Florist from San Francisco to Tokyo breath new life into the collection, creating their own masterpieces inspired by the works of art. This beautiful event only lasts from March 13th-March 18th.

<http://deyoung.famsf.org/exhibitions/bouquets-to-art-2018>



Rock 'n' Roll Race

The Rock 'n' Roll Marathon is celebrating its 6th anniversary in San Francisco. Join the fun by registering to run a half marathon on Sunday April 8th. The streets are lined with mini-concerts to make the miles fly by.

<http://www.runrocknroll.com/san-francisco/>



St. Patrick's Day Parade and Festival

Join the St. Patrick's Day fun by being part of the parade going along Market street to Civic Center Plaza where the party continues with music, food, and fun!

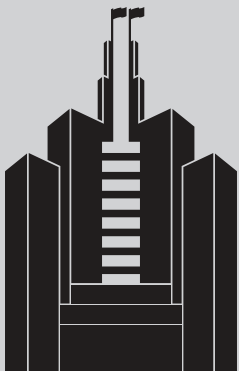
<http://www.sresproductions.com/events/st-patricks-day-festival/>



San Francisco International Beer Festival

Experience San Francisco's oldest beer festival as it celebrates its 35th anniversary. The festival will take over the Fort Mason Pavilion on April 8th. Enjoy an evening of beer sampling, delicious food, live music, and games.

<https://www.sfbeerfest.com/>



345 California Street
San Francisco, CA 94104
(415) 434-7747

MICHAEL MURPHY
General Manager
(415) 434-7747
mmurphy@345cal.com

ELIZABETH OLIN
Property Administrator
(415) 434-7747
eolin@345cal.com

ROSS ROBINSON
Managing Director
(415) 773-3576
ross.robinson@cushwake.com

DANIEL SHERMAN
Property Manager
(415) 434-7747
dsherman@345cal.com

TIM DANZ
Chief Engineer
(415) 434-7747
tdanz@345cal.com

TIM HOGAN
Senior Director
(415) 694-6477
tim.hogan@cushwake.com

JEAN-MARC BOHIN
Director of Security
(415) 434-7747
jmbohin@345cal.com

GREG FOGG
Executive Managing Director
(415) 773-3560
greg.fogg@cushwake.com

METROPOLIS
Investment Holdings Inc.

