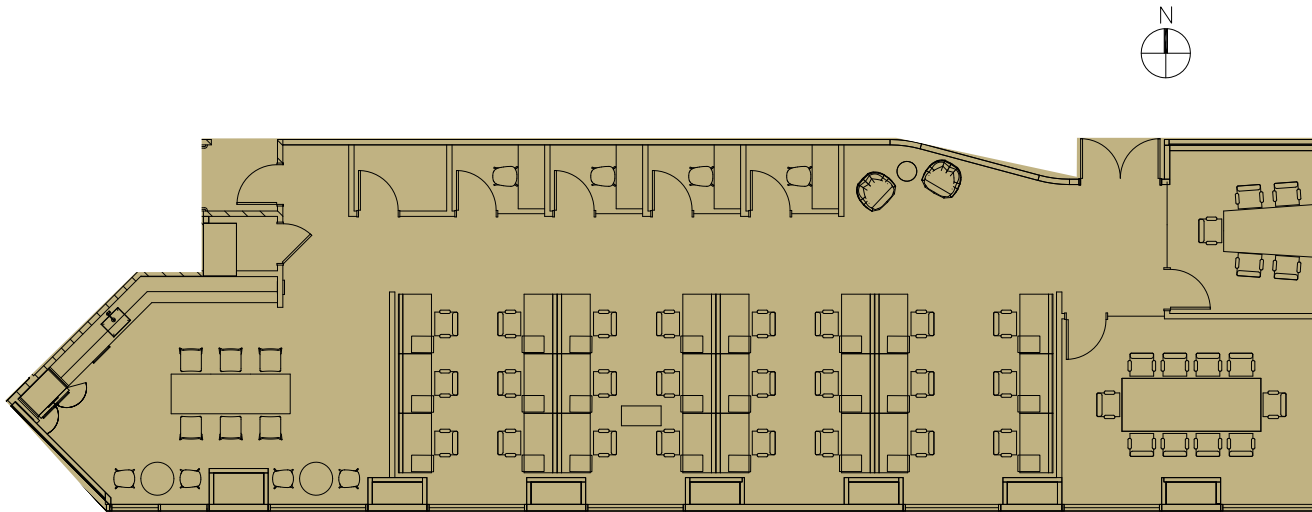
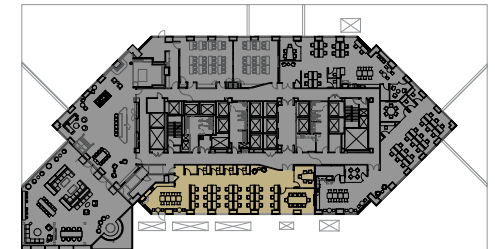


# Floor Plan

5th Floor | Suite 550 | 3,098 RSF



- Spec Suite
- 24 Workstations
- 2 Conf. Rooms
- 4 Phone Rooms
- Kitchen/Break Area



**Greg Fogg**

415 773 3560

greg.fogg@cushwake.com

LIC# 01060589

**Sam Wasserstein**

415 773 3528

sam.wasserstein@cushwake.com

LIC# 01798616

